



READ CAREFULLY BEFORE INSTALLATION.

Wood is a living material and deserves all your attention

- To obtain entire satisfaction of your cladding, wall or ceiling,

It is essential to follow the advice of laying below.

- Failure to follow these instructions is the responsibility of the layer.

This installation instruction, based on our experience, completes texts in force.

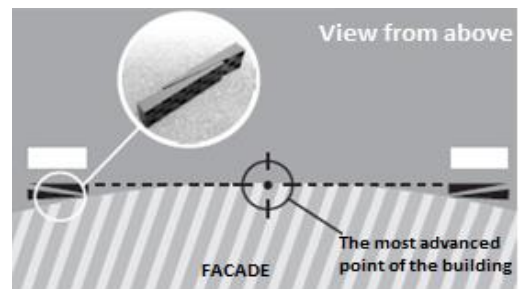
- Your cladding has undergone rigorous controls during manufacture. However, if a default would have escaped our control, do not lay and contact your supplier for advice.

- This installation instruction considers **a cement block wall to cover in the horizontal way**, with insulation sheet against wind and rain

- The wall to cover must be **free of cracks and non-resistant material.**

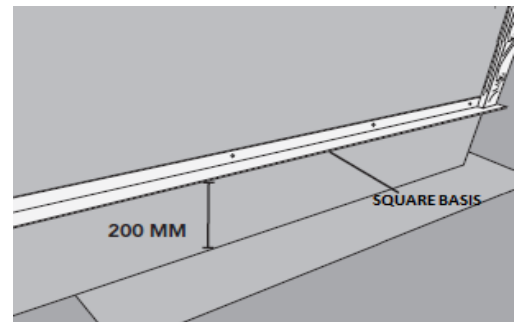
LAYING STEP 01

Find the most advanced point on the wall to determine the zero point based on which the levelling will support. Based on the zero point, begin to lay the slats (section 20x60mm) on the surface to be covered by adjusting them with a level. Then, make a notch at a size 3x45mm in the base of the battens to lay (see laying step 4)



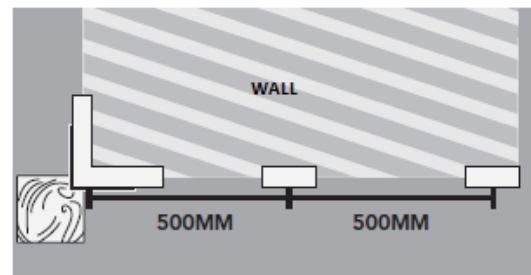
LAYING STEP 02

- A space of 200mm between the ground and the facade to be covered is left in order to avoid rising water in the system.
- Fix to the wall an aluminium square basis section 40x40mm. It will be placed from the outer slat to another following their straightness and always at 200mm from the ground. This square basis will be the invisible base of the system.



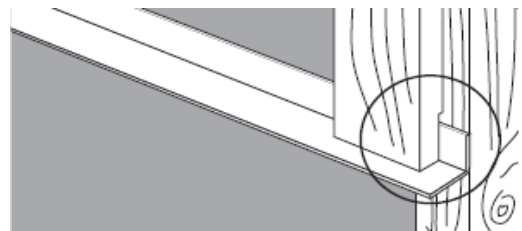
LAYING STEP 03

Straightness and preparation of the framework: the levelling is made with autoclave spruce slats section 30x70mm minimum. Fixing slats into the wall every 50cm in the vertical direction with stainless steel screws A2 6x60 or a size in relation to the outside wall level. The distance between the axe of the slats must be 500mm.



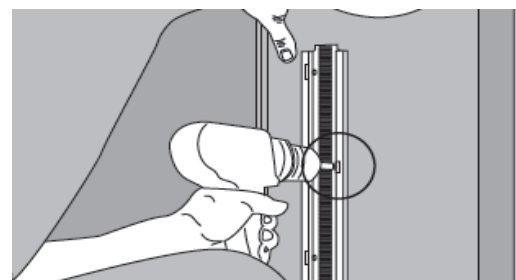
LAYING STEP 04

A notch of 3mm thick and 45mm in height will be performed at the base of autoclave slats. These slats are installed at right level to include the thickness of the aluminium square basis previously laid.



LAYING STEP 05

- After fixing the slats, cover it by a rain and wind insulation membrane. Fixing the membrane with staples, covering 10 cm of previous membrane laid.
- Fixing bases Techniclic® through the membrane on the slats levelled with Vetedy's stainless steel screws A2 4x25mm. The first base will directly be installed on the square basis.



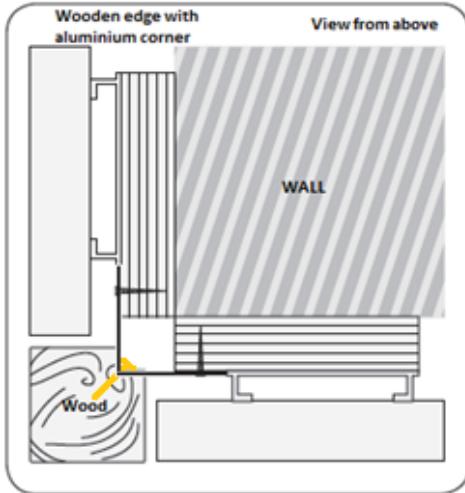
LAYING FINITION CORNERS

The wall angles will be made by:

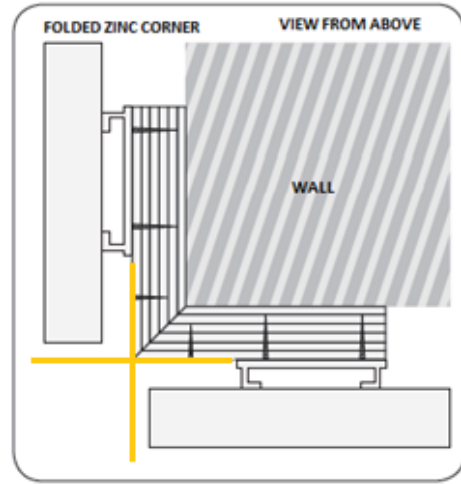
- Or a wooden edge fixed on a corner in Aluminium thermo lacquered, called full edge.
- Or a corner in dark brown thermo-coated zinc, called empty edge.

Both finishes are produced in the Vetedy standard manufacturing program.

FULL EDGE

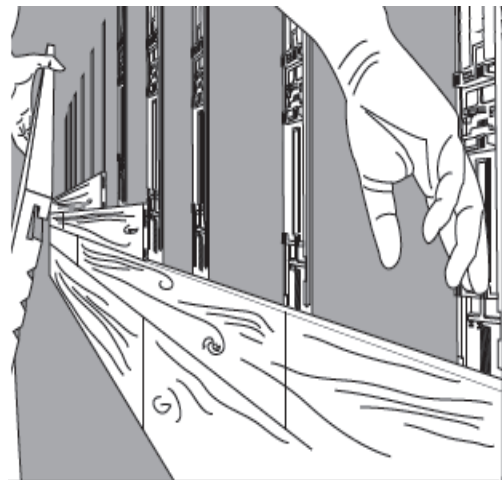


EMPTY EDGE



LAYING STEP 06

- Insert the size matching's clip with the width of Techniclic® boards requested by the customer; slot the first wooden board and tighten it with the clip of the next line. Then slot the second board at the end of the first and continue on with full boards to the end of the surface to be covered
- The board cut at the end of the line will be the starter board of the next line unless there is a minimum of 500mm from one board end to the other. And carry on until the last board.
- Exterior glue will be applied in the groove of the board to ensure proper assembly without movement. To have a perfectly straight work, we will use conical wedges specially designed for a perfect fit at the end of the boards.
- In the beginning and the end of each line, exterior glue will be applied on the clip to avoid any lateral movement.



REMOVAL OF A BOARD *Techniclic*®

- Use a chisel of 5mm width well sharpened. Proceed to the cut of the two separators "H" located between the two boards (note: separators to be cut are always above the board to remove) Remove the board by pushing up against the board located above and get it out of the fixing clips.
- Replace this board proceeding in the reverse direction and insert one or two spare separators notching in the holes provided for this purpose.
- The fixing separator is done automatically by clipping as soon as we press the piece on its location.

